



SPRING LANDS DOWNUNDER 2025



THROWS & BEDDING



Lands Downunder is a leading textile company known for high-quality throw blankets, bedding and pillows made by ethical suppliers in Italy, Portugal, and New Zealand. Our home accents help reflect the art of personal style and expression. With our customer at our core, we continually strive to bring the latest trends and styles into our product offerings.

Our dedication to quality and style has earned us features in HGTV, House Beautiful, Elle Decor, Southern Living and more. We're proud to have been to have been chosen for Oprah's Favorite Things four times and highlighted on iconic shows like Good Morning America and The Nate Berkus Show.

Not only do we love what we do, we love our customers, and take pride in providing you with timeless and curated pieces for your home.



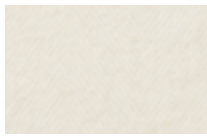
Throws

Herringbone Throw

50% Cotton & 50% Soft Acrylic / 51"W x 67"L / Made in Italy.
Cold water wash, lay flat to dry. Dry clean for best results.



Ecrú
AH-ECR



Birch
AH-BIRCH



Dune
AH-DUNE



White Truffle
AH-TRUFFLE



Sand
AH-SAND



Soft Linen
AH-LINEN



Caramel
AH-CARA



Butter
AH-BUTTER



Sunflower
AH-SUN



Gold
AH-GOLD



Cider
AH-CIDER



Ochre
AH-OCBRE



Mango
AH-MANGO



Papaya
AH-PAPA



Tangerine
AH-TANG



Mandarin
AH-MAND



Copper
AH-COPP



Spicy Orange
AH-SPICE



Pink Salt
AH-SALT



Rose Quartz
AH-QUARTZ



Smokey Mauve
AH-SMOKE



Cherry Blossom
AH-BLOS



Blush
AH-BLUSH



Berry Sorbet
AH-BRYS



Tea Rose
AH-ROSE



Coral
AH-CORAL



Wild Orchid
AH-ORCH



Peony
AH-PEONY



Red Poppy
AH-RED



Cranberry
AH-CRAN



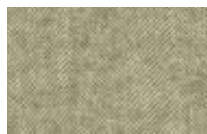
Deep Merlot
AH-MERLO



Lemongrass
AH-LGRAS



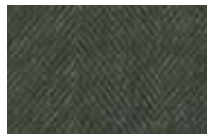
Fern
AH-FERN



Thyme
AH-THYME



Olive
AH-OLIVE



Fresh Pine
AH-PINE



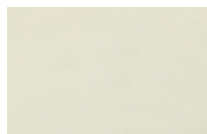
Hunter
AH-HUNTER



Moss
AH-MOSS



White Sage
AH-SAGE



Icy Lime
AH-ILIME



Seaglass
AH-GLASS



Ice Blue
AH-ICEB



Lagoon
AH-LAGOON



Agave
AH-AGAVE



Turquoise
AH-TURQ



Aqua
AH-AQUA



Blue Spruce
AH-SPRUCE



Teal
AH-TEAL



NEW COLORS



OUR BEST SELLER

Aspen Throw

50% Cotton & 50% Soft Acrylic
51"W x 67"L / Made in Italy.

Cold water wash, lay flat to dry.
Dry clean for best results.

The Aspen Throw offers a delightful yet timeless way to add a splash of color to your home. With its reversible design, it enhances the elegant drape while showcasing the charming eyelash fringe. This beautiful piece is not just a stylish accessory; it's also incredibly soft and cozy, this will be your next favorite!



Palm
AP-PALM



Mango
AP-MANGO



Latte
AP-LATTE



Blue Eclipse
AP-ECLIPSE



Fern
AP-FERN



Hydrangea
AP-HYDRA



Iris
AP-IRIS



Niagra
AP-NIAGRA



Almond
AP-ALMOND



Silver Birch
AP-SBIRCH



Amber
AP-AMBER



Cotton Candy
AP-CANDY



White Sage
AP-SAGE



Meadow
AP-MEADOW

Sutton Plaid Throw

50% Cotton & 50% Soft Acrylic
51"W x 67"L / Made in Italy.

Cold water wash, lay flat to dry.
Dry clean for best results.

The Sutton Plaid Throw embodies European sophistication, adding a touch of elegance and refinement to your home. Featuring a classic glen plaid check and a soft eyelash fringe, it serves as the ideal cozy enhancement to your living space.



Chambray
SU-CHAMB



Charcoal
SU-CHARC



Cider
SU-CIDER



Crystal Blue
SU-CRYSTAL



Chive
SU-CHIVE



Dune
SU-DUNE



Lemongrass
SU-LGRAS



Light Gray
SU-LGRAY



Mink
SU-MINK



Navy
SU-NAVY



Fern
SU-FERN



Mandarin
SU-MAND



Sage
SU-SAGE



Spice
SU-SPICE



Hampton Plaid Herringbone Throw

50% Cotton & 50% Soft Acrylic / 51"W x 67"L / Made in Italy.
Cold water wash, lay flat to dry. Dry clean for best results.

This throw gives a stylish update on a classic plaid. It is loomed in Italy for incredible quality and is a perfect layering piece for any time of the year! This timeless, one-of-a-kind throw comes in 7 different colors to fit every style and mood.



Chambray
HTP-CHAMB

Dune
HTP-DUNE

Hydrangea
HTP-HYDRA

Navy
HTP-NAVY



Pebble
HTP-PEBBLE

Silver
HTP-SILV

Olive
HTP-OLIVE



Montauk Stripe Herringbone Throw

50% Cotton & 50% Soft Acrylic
51"W x 67"L / Made in Italy.
Cold water wash, lay flat to dry.
Dry clean for best results.



Crystal Blue
MTK-CRYSTAL



Blue Denim
MTK-DENIM



Navy
MTK-NAVY



Spicy Orange
MTK-SPICE



Light Gray
MTK-LGRAY



Pebble
MTK-PEBBLE



Dune
MTK-DUNE



Mink
MTK-MINK



Olive
MTK-OLIVE



Lemongrass
MTK-LGRAS



Caramel
MTK-CARA



Charcoal
MTK-CHARC

Buffalo Check Throw

50% Cotton & 50% Soft Acrylic
51"W x 67"L Made in Italy.

Cold water wash, lay flat to dry.
Dry clean for best results.



Barnwood
BUF-BARN



Caramel
BUF-CARA



Dune
BUF-DUNE



Birch
BUF-BIRCH



Navy
BUF-NAVY



Marina
BUF-MARINA



Blue Denim
BUF-DENIM



Baby Blue
BUF-BBLUE



Blue Denim/Light Gray
BUF-DELG



Pine/Graphite
BUF-PNGR



Olive
BUF-OLIVE



Light Gray
BUF-LGRAY



Red/Graphite
BUF-REGR





Wellington Plaid Throw

50% Cotton & 50% Soft Acrylic
51"W x 67"L. Made in Italy.

Cold water wash, lay flat to dry.
Dry clean for best results.



Rose Quartz
WL-QUARTZ



Spicy Orange
WL-SPICE



Cider
WL-CIDER



Lemongrass
WL-LGRAS



Hunter
WL-HUNTER



Denim
WL-DENIM



Lake
WL-LAKE



Light Gray
WL-LGRAY



Charcoal
WL-CHARC



Barnwood
WL-BARN



Lilac
WL-LILAC



Deep Merlot
WL-MERLO



Olive
WL-OLIVE

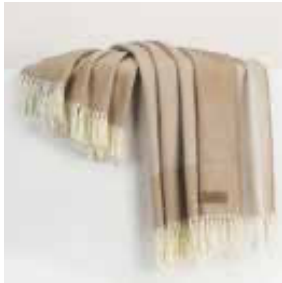


Silver
WL-SILV

Border Herringbone Throw

50% Cotton & 50% Soft Acrylic
51"W x 67"L / Made in Italy.

Cold water wash, lay flat to dry.
Dry clean for best results.



Dune
BH-DUNE



Navy
BH-NAVY



Mink
BH-MINK



Olive
BH-OLIVE



Azure
BH-AZURE



Caramel
BH-CARA



Light Gray
BH-LGRAY



Graphite
BH-GRAPH



Tattersall Plaid Throw

50% Cotton & 50% Soft Acrylic
51"W x 67"L / Made in Italy.

Cold water wash, lay flat to dry.
Dry clean for best results.



Barnwood/Dune
TS-BADU



Blue Denim/Baby Blue
TS-DEBA



Light Gray/Graphite
TS-LGGR



Lilac/Navy
TS-LINA



Navy/Caramel
TS-NACA



Pine/Graphite
TS-PNGR

Rugby Stripe Herringbone Throw

50% Cotton & 50% Soft Acrylic / 51"W x 67"L / Made in Italy.
Cold water wash, lay flat to dry. Dry clean for best results.



Blush
RS-BLUSH

Glacier
RS-GLAC

Light Gray
RS-LGRAY

Barnwood
RS-BARN

Sydney Herringbone Stripe Throw

50% Cotton & 50% Soft Acrylic
51"W x 67"L / Made in Italy.

Cold water wash, lay flat to dry.
Dry clean for best results.



Mandarin
SST-MAND

Coral
SST-CORAL

Navy
SST-NAVY

Blush
SST-BLUSH

Blue Denim
SST-DENIM

Charcoal
SST-CHARC



Light Gray
SST-LGRAY

Dune
SST-DUNE

Lemongrass
SST-LGRAS

Caramel
SST-CARA

Glacier
SST-GLAC



Lexington Plaid Throw

50% Cotton & 50% Soft Acrylic
51"W x 67"L / Made in Italy.

Cold water wash, lay flat to dry.
Dry clean for best results.

Our Lexington Plaid Throw is inspired by our beautiful Windowpane design. Available in 10 different colors, it complements any design aesthetic and adds an extra touch of warmth to your home.



Barnwood
LEX-BARN



Baby Blue
LEX-BBLUE



Cherry Blossom
LEX-BLOS



Dune
LEX-DUNE



Navy
LEX-NAVY



Ochre
LEX-CHRE



Blue Denim
LEX-DENIM



Spicy Orange
LEX-SPICE



Caramel
LEX-CARA



Zip Solid Herringbone Pillow Cover

50% Cotton & 50% Soft Acrylic / 20"W x 20"H / Made in Italy.
Cold water wash, lay flat to dry. Dry clean for best results.

Down Feather Inserts Sold Separately: 90% Feather & 10% Down Insert, 100% Cotton Cover | 22"x 22" Insert



Mandarin
ZPAH-MAND



Rose Quartz
ZPAH-QUARTZ



Mink
ZPAH-MINK



Caramel
ZPAH-CARA



Dune
ZPAH-DUNE



Birch
ZPAH-BIRCH



Crystal Blue
ZPAH-CRYSTAL



Denim
ZPAH-DENIM



Fern
ZPAH-FERN



Navy
ZPAH-NAVY



Light Gray
ZPAH-LGRAY



Silver
ZPAH-SILV



Ochre
ZPAH-OCHRE



Lake
ZPAH-LAKE

Woven in the same blend as our signature Herringbone Throws, these pillows add a stylish accent to your living space and are perfect for mixing & matching.

Remo Pillow Decorative Cover

100% Cotton / 22"W x 22"H / Made in Portugal.
Cold water wash, lay flat to dry. Dry clean for best results.

Down Feather Inserts Sold Separately: 90% Feather &
10% Down Insert, 100% Cotton Cover | 24"x 24"



Coconut Milk
RD-COCO



Powder Blue
RD-POWDER



Niagra Mist
RD-MIST



Sea
RD-SEA



Steel
RD-STEEL

Remo Pillow Lumbar Cover

100% Cotton / 12"W x 24"H / Made in Portugal.
Cold water wash, lay flat to dry. Dry clean for best results.

Down Feather Inserts Sold Separately: 90% Feather &
10% Down Insert, 100% Cotton Cover | 14"x 24"



Powder Blue
RL-POWDER



Niagra Mist
RL-MIST



Coconut Milk
RL-COCO



Steel
RL-STEEL



Fiji Stripe Throw

50% Cotton & 50% Soft Acrylic
51"W x 67"L / Made in Italy.

Cold water wash, lay flat to dry.
Dry clean for best results.



Light Gray
FJ-LGRAY



Crystal Blue
FJ-CRYSTAL



Navy
FJ-NAVY



Sage
FJ-SAGE



Copper
FJ-COPP



Twilight
FJ-TWIL



Papaya
FJ-PAPA



Wild Orchid
FJ-ORCH



Lemongrass
FJ-LGRAS



Sky Blue
FJ-SKY



Charcoal
FJ-CHARC



Blue Denim
FJ-DENIM



Dune
FJ-DUNE

San Marino Throw

100% Cotton / 50"W x 70"L
Made in Portugal.

Machine Wash Cold Separately.
Gentle Cycle. Mild Detergent.

No Chlorine Bleach. Tumble Dry
Low. Remove Promptly.



Ocean Blue
SM-OCEAN



Silver
SM-SILVER



Taupe
SM-TAUPE



Sky Blue
SM-SKY



Ash Gray
SM-ASH



Sage
SM-SAGE



Sandstone
SM-SAND



Primrose
SM-PRIM



Fuchsia
SM-Fuchsia



Sun
SM-SUN



Papaya
SM-PAPA



Glacier
SM-GLAC



Glacier
WW-GLAC

Lake
WW-LAKE

Shell
WW-SHELL

Sky
WW-SKY

New Collection

Willow Throw

100% Cotton / 50"W x 70"L
Made in Portugal.

Machine Wash Cold Separately.
Gentle Cycle. Mild Detergent.

No Chlorine Bleach. Tumble Dry
Low. Remove Promptly.

The Willow Throw is crafted in Portugal from 100% cotton. Its reversible design provides a versatile drape suitable for both indoor and outdoor spaces. Additionally, it is machine washable and dryer-friendly!



Lisbon Cotton Throw

100% Cotton / 50"W x 70"L / Made in Portugal.
Cold water wash, lay flat to dry. Dry clean for best results.



Taupe
LB-TAUPE



Olive
LB-OLIVE



Charcoal
LB-CHARC



Soho Cotton/Linen Throw

60% Cotton & 40% Linen
50"W x 70"L / Made in Portugal.

Cold water wash, lay flat to dry.
Dry clean for best results.

Our Soho collection is a simple luxury. This cotton-linen blend comes in a range of hues, is incredibly versatile, and has subtle texture. It is the perfect layer for all seasons.



Natural
SH-NATURAL



Dried Sage
SH-DSAGE



Stone
SH-STONE



Rust
SH-RUST



Pomegranate
SH-POM



Lime
SH-LIME



Arctic Blue
SH-ARCTIC



Lakeside
SH-LAKE



Herringbone Cashmere Throw

20% Cashmere & 80% Lambswool / 51"W x 67"L
 Made in Italy. Dry clean only.



Silver
 HR-SILVER



Pink
 HR-PINK



Taupe
 HR-TAUPE



Sand
 HR-SAND



Sky Blue
 HR-SKY



Slate
 HR-Slate



Ivory
 HR-IVORY



Woven from pure cashmere and lambswool, our luxurious throw offers a classic design and pure comfort. A beautiful touch for any use in your home.

Pinstripe Cashmere Throw

20% Cashmere & 80% Lambswool / 51"W x 67"L
 Made in Italy. Dry clean only.



Silver
PIN-SILVER



Slate
PIN-SLATE



Onyx
PIN-ONYX



Sky Blue
PIN-SKY



Pacific
PIN-PACIFIC



Sand
PIN-SAND



Taupe
PIN-TAUPE



Mocha
PIN-MOCHA



Navy
PIN-NAVY

Windowpane Cashmere Throw

20% Cashmere & 80% Lambswool / 51"W x 67"L
Made in Italy. Dry clean only.



Taupe
CHARM 100



Mocha
CHARM 150



Ecrú & Taupe
CHARM 200



Sand
CHARM 250



Navy
CHARM 400



Sky Blue
CHARM 450



Gray
CHARM 500



Onyx
CHARM 700



Light Gray
CHARM 900



Ecrú & Navy
CHARM 300





Italian Texture Strato Throw

70% Merino Wool & 30%
Nylon / 51"W x 75"L

Made in Italy.
Dry Clean Only.



Blue
TX-BLUE



Gray
TX-GRAY



Taupe
TX-TAUPE



Luna Cashmere Throw

20% Cashmere &
80% Lambswool / 50"W x 70"L

Made in Italy.
Dry Clean Only.



Light Gray
LUN-LGRAY



Silver
LUN-SILVER

Milano Merino Throw

100% Merino Wool
55"W x 75"L

Made in Italy.
Dry Clean Only.



Black
ML-BLACK



Juno Cashmere Throw

20% Cashmere & 80% Lambswool / 51"W x 67"L
 Made in Italy. Dry clean only.



Heathered Ivory
 JUN-IVORY



Taupe
 JUN-TAUPE



Navy
 JUN-NAVY



Ecrú
 JUN-ECRU



Light Gray
 JUN-LGRAY



Light Blue
 JUN-LBLUE



Pacific
 JUN-PACIFIC



Sand
 JUN-SAND

Crafted from naturally occurring colors... so no dyes are needed, this sumptuous Brushed Alpaca Throw is exquisitely soft, naturally repels dirt, and retains heat.



New Zealand Alpaca Throw

100% Pure Alpaca Pile / 51"W x 72"L
Made in New Zealand. Cool hand wash or Dry clean.



Cream
AL-CREAM



Sand
AL-SAND



Driftwood
AL-DRIFT



Friesian
AL-FRIE



Apache
AL-APACHE



Chateau
AL-CHATE



New Zealand Mohair Throw

100% Pure Mohair Pile
51"W x 72"L

Made in New Zealand
Cool hand wash or Dry Clean.



Snowflake
MO-SNOW



Cream
MO-CREAM



Flax
MO-FLAX



Ashwood Brown
MO-ASH



Charcoal
MO-CHARC



Raven
MO-RAV



Slate
MO-SLATE



Pewter
MO-PEWT



Silver
MO-SILV



Navy
MO-NAVY



Indigo
MO-INDIGO



Denim
MO-DENIM



Provence
MO-PRO



Sky Blue
MO-SKY



Lake
MO-LAKE



Turquoise
MO-TURQ



Sea Spray
MO-SEA



Glacier Blue
MO-GLAC



Olive
MO-OLIVE



Sage
MO-SAGE



Fern
MO-FERN



Pesto
MO-PESTO



Ochre
MO-ochre



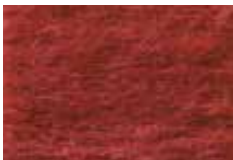
Mango
MO-MAN



Persimmon
MO-PERS



Hibiscus
MO-HIBI



Russet
MO-RUSS



Tearose
MO-TEA



Cranberry
MO-CRAN



Scarlet
MO-SCAR



Hot Pink
MO-HOT



Pink Lotus
MO-LOTUS



Grape
MO-GRAPE



Mulberry
MO-MUL



Bedding

BLANKETS

EASTON QUILTED COTTON BLANKET

COUNTRY OF ORIGIN: MADE IN PORTUGAL
100% COTTON
FABRICATION: GARMENT DYED
HEM: 7/8" HEM
COLORS: WHITE, LIGHT BLUE
OEKO-TEX CERTIFIED
PRE-WASH / PRE-SHRUNK



| DESCRIPTION | STYLE | SIZE | COLOR |
|---------------|--------|-----------|-------|
| TWIN BLANKET | 2PBEWT | 72" x 90" | WHITE |
| QUEEN BLANKET | 2PBEWQ | 90" x 90" | WHITE |
| KING BLANKET | 2PBEWK | 110"x90" | WHITE |
| STANDARD SHAM | 2PSEW | 20"x26" | WHITE |
| EURO SHAM | 2PEEW | 26" x 26" | WHITE |

BLANKETS

BRISTOL COTTON BLANKET

COUNTRY OF ORIGIN: MADE IN PORTUGAL
 FIBER: 100% COMBED COTTON
 HEM: 7/8" HEM
 COLORS: WHITE, OFF-WHITE
 OEKO-TEX CERTIFIED
 PRE-WASH / PRE-SHRUNK



WHITE



OFF-WHITE



| DESCRIPTION | STYLE | SIZE | COLOR |
|---------------|--------|-----------|-------|
| QUEEN BLANKET | 2PBBWQ | 90" x 90" | WHITE |
| KING BLANKET | 2PBBWK | 110"x90" | WHITE |

| DESCRIPTION | STYLE | SIZE | COLOR |
|---------------|--------|-----------|-----------|
| QUEEN BLANKET | 2PBBOQ | 90" x 90" | OFF-WHITE |
| KING BLANKET | 2PBBOK | 110"x90" | OFF-WHITE |

HUNTER COTTON BLANKET

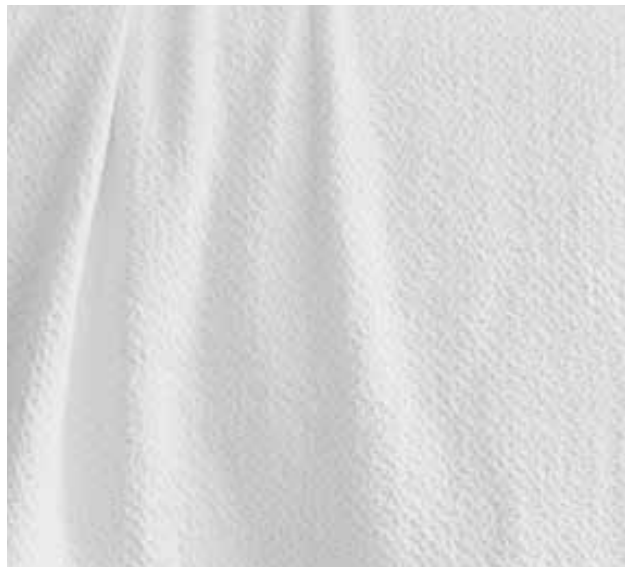
COUNTRY OF ORIGIN: MADE IN PORTUGAL
 FIBER: 100% COMBED COTTON
 HEM: 7/8" HEM
 COLORS: WHITE, OFF-WHITE
 OEKO-TEX CERTIFIED
 PRE-WASH / PRE-SHRUNK



WHITE



OFF-WHITE



| DESCRIPTION | STYLE | SIZE | COLOR |
|---------------|--------|-----------|-------|
| QUEEN BLANKET | 2PBHWQ | 90" x 90" | WHITE |
| KING BLANKET | 2PBHWK | 110"x90" | WHITE |

| DESCRIPTION | STYLE | SIZE | COLOR |
|---------------|--------|-----------|-----------|
| QUEEN BLANKET | 2PBHQQ | 90" x 90" | OFF-WHITE |
| KING BLANKET | 2PBHOK | 110"x90" | OFF-WHITE |

BLANKETS

CAPRI HERRINGBONE COTTON BLANKET

COUNTRY OF ORIGIN: MADE IN PORTUGAL

FIBER: 100% COMBED COTTON

HEM: 7/8" HEM

COLORS: WHITE, GLACIER, AZURE, DUNE

OEKO-TEX CERTIFIED

PRE-WASH / PRE-SHRUNK



WHITE



GLACIER



AZURE



DUNE

| DESCRIPTION | STYLE | SIZE | COLOR |
|---------------|----------|-----------|-------|
| QUEEN BLANKET | 3CB-WH-Q | 90" x 90" | WHITE |
| KING BLANKET | 3CB-WH-K | 110"x90" | WHITE |

| DESCRIPTION | STYLE | SIZE | COLOR |
|---------------|----------|-----------|---------|
| QUEEN BLANKET | 3CB-GL-Q | 90" x 90" | GLACIER |
| KING BLANKET | 3CB-GL-K | 110"x90" | GLACIER |

| DESCRIPTION | STYLE | SIZE | COLOR |
|---------------|----------|-----------|-------|
| QUEEN BLANKET | 3CB-AZ-Q | 90" x 90" | AZURE |
| KING BLANKET | 3CB-AZ-K | 110"x90" | AZURE |

| DESCRIPTION | STYLE | SIZE | COLOR |
|---------------|----------|-----------|-------|
| QUEEN BLANKET | 3CB-DU-Q | 90" x 90" | DUNE |
| KING BLANKET | 3CB-DU-K | 110"x90" | DUNE |

BLANKETS

WARWICK

COTTON/LINEN WAFFLE BLANKET

COUNTRY OF ORIGIN: MADE IN PORTUGAL

FIBER: 55% COTTON, 45% LINEN

HEM: 7/8" HEM

COLORS: WHITE

OEKO-TEX CERTIFIED

PRE-WASH / PRE-SHRUNK



| DESCRIPTION | STYLE | SIZE | COLOR |
|---------------|----------|-----------|-------|
| QUEEN BLANKET | 2WB-WH-Q | 90" x 90" | WHITE |
| KING BLANKET | 2WB-WH-K | 110"x90" | WHITE |



BLANKETS

LEAF REVERSIBLE BLANKET

COUNTRY OF ORIGIN: MADE IN PORTUGAL
 FIBER: 100% COTTON
 HEM: 7/8" HEM
 COLORS: DUCK EGG, PUTTY, CORNFLOWER, TARRAGON
 OEKO-TEX CERTIFIED
 PRE-WASH / PRE-SHRUNK

| DESCRIPTION | STYLE | SIZE | COLOR |
|--------------|----------|------------|----------|
| KING BLANKET | 2LC-DE-K | 110" x 90" | DUCK EGG |
| EURO SHAM | 2LS-DE-E | 26" x 26" | DUCK EGG |



| DESCRIPTION | STYLE | SIZE | COLOR |
|---------------|-----------|------------|-------|
| QUEEN BLANKET | 2LC-PUT-Q | 90" x 90" | PUTTY |
| KING BLANKET | 2LC-PUT-K | 110" x 90" | PUTTY |
| EURO SHAM | 2LS-PUT-E | 26" x 26" | PUTTY |



| DESCRIPTION | STYLE | SIZE | COLOR |
|---------------|----------|------------|------------|
| QUEEN BLANKET | 2LC-CF-Q | 90" x 90" | CORNFLOWER |
| KING BLANKET | 2LC-CF-K | 110" x 90" | CORNFLOWER |
| EURO SHAM | 2LS-CF-E | 26" x 26" | CORNFLOWER |



New Color

| DESCRIPTION | STYLE | SIZE | COLOR |
|---------------|----------|------------|----------|
| QUEEN BLANKET | 2LC-TA-Q | 90" x 90" | TARRAGON |
| KING BLANKET | 2LC-TA-K | 110" x 90" | TARRAGON |
| EURO SHAM | 2LS-TA-E | 26" x 26" | TARRAGON |



BLANKETS

GREENWICH COTTON BLANKET



COUNTRY OF ORIGIN: MADE IN PORTUGAL
 FIBER: 100% COTTON
 HEM: 7/8" HEM
 COLORS: WHITE, OFF-WHITE
 OEKO-TEX CERTIFIED
 PRE-WASH / PRE-SHRUNK

| DESCRIPTION | STYLE | SIZE | COLOR |
|---------------|----------|-----------|-----------|
| QUEEN BLANKET | 2LB-WH-Q | 90" x 90" | WHITE |
| KING BLANKET | 2LB-WH-K | 110"x90" | WHITE |
| DESCRIPTION | STYLE | SIZE | COLOR |
| QUEEN BLANKET | 2LB-OW-Q | 90" x 90" | OFF-WHITE |
| KING BLANKET | 2LB-OW-K | 110"x90" | OFF-WHITE |

TILE COTTON BLANKET



COUNTRY OF ORIGIN: MADE IN PORTUGAL
 FIBER: 100% COTTON
 HEM: 7/8" HEM
 COLORS: WHITE
 OEKO-TEX CERTIFIED
 PRE-WASH / PRE-SHRUNK

| DESCRIPTION | STYLE | SIZE | COLOR |
|---------------|----------|-----------|-------|
| QUEEN BLANKET | 2TB-WH-Q | 90" x 90" | WHITE |
| KING BLANKET | 2TB-WH-K | 110"x90" | WHITE |
| EURO SHAM | 2TS-WH-E | 26"x26" | WHITE |



BLANKETS

MILO LINEN BLANKET

COUNTRY OF ORIGIN: MADE IN PORTUGAL
 FIBER: 100% LINEN
 HEM: MITERED CORNERS WITH 1.5" HEM
 COLORS: PRAIRIE
 OEKO-TEX CERTIFIED
 PRE-WASH / PRE-SHRUNK



| DESCRIPTION | STYLE | SIZE | COLOR |
|---------------|----------|------------|---------|
| QUEEN BLANKET | 2MC-PR-Q | 90" x 90" | PRAIRIE |
| KING BLANKET | 2MC-PR-K | 110" x 90" | PRAIRIE |
| EURO SHAM | 2MS-PR-E | 26" x 26" | PRAIRIE |

WINSLOW LINEN BLANKET

COUNTRY OF ORIGIN: MADE IN PORTUGAL
 FIBER: 100% LINEN
 HEM: 1.5" MITERED HEM
 COLORS: WHITE, LATTE
 OEKO-TEX CERTIFIED
 PRE-WASH / PRE-SHRUNK



WHITE



LATTE

| DESCRIPTION | STYLE | SIZE | COLOR |
|---------------|-----------|------------|-------|
| QUEEN BLANKET | 2WSB-WH-Q | 90" x 90" | WHITE |
| KING BLANKET | 2WSB-WH-K | 110" x 90" | WHITE |

| DESCRIPTION | STYLE | SIZE | COLOR |
|---------------|------------|------------|-------|
| QUEEN BLANKET | 2WSB-LAT-Q | 90" x 90" | LATTE |
| KING BLANKET | 2WSB-LAT-K | 110" x 90" | LATTE |

BLANKETS

HERRINGBONE SHUTTLE LOOM COTTON BLANKET

COUNTRY OF ORIGIN: MADE IN PORTUGAL
 FIBER: 100% COTTON
 HEM: 1.5" HEM WITH MITERED CORNERS
 COLORS: WHITE, CREAM
 OEKO-TEX CERTIFIED
 PRE-WASH / PRE-SHRUNK



WHITE



CREAM



| DESCRIPTION | STYLE | SIZE | COLOR |
|--------------|--------|-----------|-------|
| TWIN BLANKET | 1ABHWT | 72" x 90" | WHITE |

| DESCRIPTION | STYLE | SIZE | COLOR |
|---------------|--------|-----------|-------|
| QUEEN BLANKET | 1ABHCQ | 90" x 90" | CREAM |

OXFORD SHUTTLE LOOM COTTON BLANKET

COUNTRY OF ORIGIN: MADE IN PORTUGAL
 FIBER: 100% COTTON
 HEM: 1.5" HEM WITH MITERED CORNERS
 COLORS: WHITE, CREAM
 OEKO-TEX CERTIFIED
 PRE-WASH / PRE-SHRUNK



WHITE



CREAM



| DESCRIPTION | STYLE | SIZE | COLOR |
|---------------|--------|-----------|-------|
| TWIN BLANKET | 1ABOWT | 72" x 90" | WHITE |
| QUEEN BLANKET | 1ABOWQ | 90" x 90" | WHITE |

| DESCRIPTION | STYLE | SIZE | COLOR |
|---------------|--------|-----------|-------|
| QUEEN BLANKET | 1ABOCQ | 90" x 90" | CREAM |

BLANKETS

DIAMOND

SHUTTLE LOOM COTTON BLANKET

COUNTRY OF ORIGIN: MADE IN PORTUGAL

FIBER: 100% COTTON
HEM: 1.5" HEM WITH
MITERED CORNERS

COLORS: WHITE
OEKO-TEX CERTIFIED
PRE-WASH / PRE-SHRUNK



| DESCRIPTION | STYLE | SIZE | COLOR |
|---------------|--------|------------|-------|
| QUEEN BLANKET | 1ABDWQ | 90" x 90" | WHITE |
| KING BLANKET | 1ABDWK | 110" x 90" | WHITE |



BLANKETS

CHEVRON COTTON BLANKET

COUNTRY OF ORIGIN: MADE IN PORTUGAL
 FIBER: 100% PREMIUM COTTON
 HEM: 7/8" HEM
 COLORS: LIGHT BLUE, WHITE, LIGHT GRAY, SHORE
 OEKO-TEX CERTIFIED
 PRE-WASH / PRE-SHRUNK



LIGHT BLUE



WHITE



LIGHT GRAY



SHORE



| DESCRIPTION | STYLE | SIZE | COLOR |
|---------------|--------|------------|------------|
| TWIN BLANKET | 4FBCBT | 72" x 90" | LIGHT BLUE |
| QUEEN BLANKET | 4FBCBQ | 90" x 90" | LIGHT BLUE |
| KING BLANKET | 4FBCBK | 110" x 90" | LIGHT BLUE |
| STANDARD SHAM | 4CSCLB | 20" x 26" | LIGHT BLUE |
| EURO SHAM | 4CECLB | 26" x 26" | LIGHT BLUE |

| DESCRIPTION | STYLE | SIZE | COLOR |
|---------------|--------|------------|-------|
| TWIN BLANKET | 4FBCWT | 72" x 90" | WHITE |
| QUEEN BLANKET | 4FBCWQ | 90" x 90" | WHITE |
| KING BLANKET | 4FBCWK | 110" x 90" | WHITE |

| DESCRIPTION | STYLE | SIZE | COLOR |
|---------------|--------|------------|------------|
| TWIN BLANKET | 4FCGT | 72" x 90" | LIGHT GRAY |
| QUEEN BLANKET | 4FCGQ | 90" x 90" | LIGHT GRAY |
| KING BLANKET | 4FCGK | 110" x 90" | LIGHT GRAY |
| EURO SHAM | 4CECLG | 26" x 26" | LIGHT GRAY |

| DESCRIPTION | STYLE | SIZE | COLOR |
|---------------|--------|------------|-------|
| TWIN BLANKET | 4FBCST | 72" x 90" | SHORE |
| QUEEN BLANKET | 4FBCSQ | 90" x 90" | SHORE |
| KING BLANKET | 4FBCSK | 110" x 90" | SHORE |

COVERLETS



COVERLETS

LATTICE COTTON COVERLET

COUNTRY OF ORIGIN: MADE IN PORTUGAL
 FIBER: 100% COTTON
 HEM: 7/8" HEM
 COLORS: WHITE, NAVY
 OEKO-TEX CERTIFIED
 PRE-WASH / PRE-SHRUNK



| DESCRIPTION | STYLE | SIZE | COLOR |
|----------------|--------|------------|-------|
| TWIN COVERLET | 3CCLWT | 68" x 96" | WHITE |
| QUEEN COVERLET | 3CCLWQ | 90" x 96" | WHITE |
| KING COVERLET | 3CCLWK | 108" x 96" | WHITE |
| STANDARD SHAM | 3CSLW | 20" x 26" | WHITE |
| EURO SHAM | 3CELW | 26" x 26" | WHITE |

| DESCRIPTION | STYLE | SIZE | COLOR |
|----------------|----------|------------|-------|
| QUEEN COVERLET | 3LC-NV-Q | 90" x 96" | NAVY |
| KING COVERLET | 3LC-NV-K | 108" x 96" | NAVY |
| EURO SHAM | 3LC-NV-E | 26" x 26" | NAVY |

SCALLOP LATTICE COTTON COVERLET

COUNTRY OF ORIGIN: MADE IN PORTUGAL
 FIBER: 100% COTTON
 HEM: 7/8" HEM
 COLORS: WHITE
 OEKO-TEX CERTIFIED
 PRE-WASH / PRE-SHRUNK



| DESCRIPTION | STYLE | SIZE | COLOR |
|----------------|-----------|------------|-------|
| QUEEN COVERLET | 3LSC-WH-Q | 90" x 96" | WHITE |
| KING COVERLET | 3LSC-WH-K | 108" x 96" | WHITE |
| STANDARD SHAM | 3LSS-WH-S | 20" x 26" | WHITE |
| EURO SHAM | 3LSS-WH-E | 26" x 26" | WHITE |

COVERLETS

DIAMOND COTTON COVERLET

COUNTRY OF ORIGIN: MADE IN PORTUGAL
 FIBER: 100% COTTON
 HEM: 7/8" HEM
 COLORS: WHITE, NAVY
 OEKO-TEX CERTIFIED
 PRE-WASH / PRE-SHRUNK



| DESCRIPTION | STYLE | SIZE | COLOR |
|----------------|----------|------------|-------|
| QUEEN COVERLET | 3DC-WH-Q | 90" x 96" | WHITE |
| KING COVERLET | 3DC-WH-K | 108" x 96" | WHITE |
| EURO SHAM | 3DS-WH-E | 26" x 26" | WHITE |
| DESCRIPTION | STYLE | SIZE | COLOR |
| QUEEN COVERLET | 3DC-NV-Q | 90" x 96" | NAVY |
| KING COVERLET | 3DC-NV-K | 108" x 96" | NAVY |
| EURO SHAM | 3DS-NV-E | 26" x 26" | NAVY |

REGATTA COTTON COVERLET

COUNTRY OF ORIGIN: MADE IN PORTUGAL
 FIBER: 100% COMBED COTTON
 HEM: 7/8" HEM
 COLORS: WHITE, OFF-WHITE
 OEKO-TEX CERTIFIED
 PRE-WASH / PRE-SHRUNK



WHITE



OFF-WHITE



| DESCRIPTION | STYLE | SIZE | COLOR |
|----------------|--------|------------|-----------|
| TWIN COVERLET | 2PCRWT | 72" x 90" | WHITE |
| QUEEN COVERLET | 2PCRWQ | 96" x 96" | WHITE |
| KING COVERLET | 2PCRWK | 114" x 96" | WHITE |
| DESCRIPTION | STYLE | SIZE | COLOR |
| QUEEN COVERLET | 2PCROQ | 96" x 96" | OFF WHITE |
| KING COVERLET | 2PCROK | 114" x 96" | OFF WHITE |



COVERLETS

MAJESTIC COTTON COVERLET COUNTRY OF ORIGIN: MADE IN PORTUGAL

FIBER: 100% COTTON
HEM: 7/8" HEM

COLORS:
WHITE

OEKO-TEX CERTIFIED
PRE-WASH / PRE-SHRUNK



| DESCRIPTION | STYLE | SIZE | COLOR |
|----------------|----------|------------|-------|
| QUEEN COVERLET | 3MC-WH-Q | 90" x 96" | WHITE |
| KING COVERLET | 3MC-WH-K | 108" x 96" | WHITE |
| EURO SHAM | 3MS-WH-E | 26" x 26" | WHITE |

COVERLETS

HONEYCOMB COTTON COVERLET

COUNTRY OF ORIGIN: MADE IN PORTUGAL
 FIBER: 100% COTTON
 HEM: 7/8" HEM
 COLORS: WHITE
 OEKO-TEX CERTIFIED
 PRE-WASH / PRE-SHRUNK



| DESCRIPTION | STYLE | SIZE | COLOR |
|----------------|---------|------------|-------|
| TWIN COVERLET | 4FCHYWT | 72" x 92" | WHITE |
| QUEEN COVERLET | 4FCHYWQ | 96" x 96" | WHITE |
| KING COVERLET | 4FCHYWK | 108" x 96" | WHITE |

WINDSOR COTTON COVERLET

COUNTRY OF ORIGIN: MADE IN PORTUGAL
 FIBER: 100% COTTON
 HEM: 7/8" HEM
 COLORS: WHITE, OFF WHITE
 OEKO-TEX CERTIFIED
 PRE-WASH / PRE-SHRUNK



| DESCRIPTION | STYLE | SIZE | COLOR |
|----------------|----------|------------|-------|
| QUEEN COVERLET | 2WC-WH-Q | 90" x 96" | WHITE |
| KING COVERLET | 2WC-WH-K | 108" x 96" | WHITE |

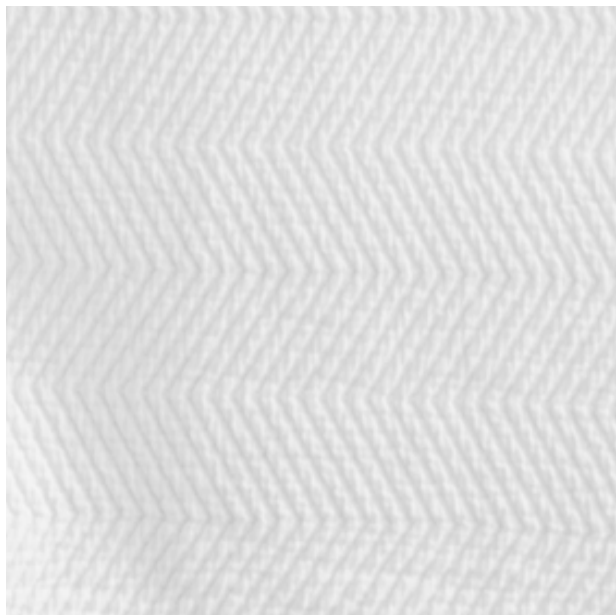
| DESCRIPTION | STYLE | SIZE | COLOR |
|----------------|----------|------------|-----------|
| QUEEN COVERLET | 2WC-OW-Q | 90" x 96" | OFF WHITE |
| KING COVERLET | 2WC-OW-K | 108" x 96" | OFF WHITE |



COVERLETS

HERRINGBONE COTTON COVERLET

COUNTRY OF ORIGIN: MADE IN PORTUGAL
 FIBER: 100% COTTON
 HEM: 7/8" HEM
 COLORS: WHITE
 OEKO-TEX CERTIFIED
 PRE-WASH / PRE-SHRUNK



| DESCRIPTION | STYLE | SIZE | COLOR |
|----------------|--------|------------|-------|
| TWIN COVERLET | 4FCHWT | 72" x 90" | WHITE |
| QUEEN COVERLET | 4FCHWQ | 90" x 90" | WHITE |
| KING COVERLET | 4FCHWK | 110" x 90" | WHITE |

MOSAIC COTTON COVERLET

COUNTRY OF ORIGIN: MADE IN PORTUGAL
 FIBER: 100% COTTON
 HEM: 7/8" HEM
 COLORS: WHITE
 OEKO-TEX CERTIFIED
 PRE-WASH / PRE-SHRUNK



| DESCRIPTION | STYLE | SIZE | COLOR |
|----------------|--------|------------|-------|
| TWIN COVERLET | 4FCMWT | 72" x 92" | WHITE |
| QUEEN COVERLET | 4FCMWQ | 92" x 96" | WHITE |
| KING COVERLET | 4FCMWK | 108" x 96" | WHITE |

BLUFFS

COTTON COVERLET

COUNTRY OF ORIGIN: MADE IN PORTUGAL
 FIBER: 100% COMBED COTTON
 HEM: 7/8" HEM
 COLORS: SKY, OCEAN, GRASS
 OEKO-TEX CERTIFIED
 PRE-WASH / PRE-SHRUNK



SKY



OCEAN



GRASS

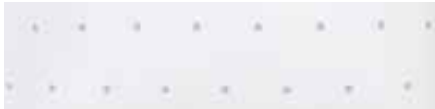
| DESCRIPTION | STYLE | SIZE | COLOR |
|-------------------------|--------|------------|-------|
| TWIN COVERLET | 3CCBBT | 68" x 96" | SKY |
| QUEEN COVERLET | 3CCBBQ | 90" x 96" | SKY |
| KING COVERLET | 3CCBBK | 108" x 96" | SKY |
| DECORATIVE PILLOW COVER | 3CPBB | 20" x 20" | SKY |

| DESCRIPTION | STYLE | SIZE | COLOR |
|-------------------------|--------|------------|-------|
| TWIN COVERLET | 3CCBOT | 68" x 96" | OCEAN |
| QUEEN COVERLET | 3CCBOQ | 90" x 96" | OCEAN |
| KING COVERLET | 3CCBOK | 108" x 96" | OCEAN |
| DECORATIVE PILLOW COVER | 3CPB0 | 20" x 20" | OCEAN |

| DESCRIPTION | STYLE | SIZE | COLOR |
|-------------------------|--------|------------|-------|
| TWIN COVERLET | 3CCBGT | 68" x 96" | GRASS |
| QUEEN COVERLET | 3CCBGQ | 90" x 96" | GRASS |
| KING COVERLET | 3CCBGK | 108" x 96" | GRASS |
| STANDARD SHAM | 3CSBG | 20" x 26" | GRASS |
| DECORATIVE PILLOW COVER | 3CPBG | 20" x 20" | GRASS |

ISLAND
COTTON COVERLET

COUNTRY OF ORIGIN: MADE IN PORTUGAL
 FIBER: 100% COMBED COTTON
 HEM: 7/8" HEM
 COLORS: SKY, OCEAN, GRASS
 OEKO-TEX CERTIFIED



SKY



OCEAN



GRASS

| DESCRIPTION | STYLE | SIZE | COLOR |
|----------------|--------|------------|-------|
| TWIN COVERLET | 3CCIBT | 68" x 96" | SKY |
| QUEEN COVERLET | 3CCIBQ | 90" x 96" | SKY |
| KING COVERLET | 3CCIBK | 108" x 96" | SKY |

| DESCRIPTION | STYLE | SIZE | COLOR |
|----------------|--------|------------|-------|
| TWIN COVERLET | 3CCIoT | 68" x 96" | OCEAN |
| QUEEN COVERLET | 3CCIOQ | 90" x 96" | OCEAN |
| KING COVERLET | 3CCIOK | 108" x 96" | OCEAN |

| DESCRIPTION | STYLE | SIZE | COLOR |
|------------------------|--------|------------|-------|
| TWIN COVERLET | 3CCIGT | 68" x 96" | GRASS |
| QUEEN COVERLET | 3CCIGQ | 90" x 96" | GRASS |
| KING COVERLET | 3CCIGK | 108" x 96" | GRASS |
| DECORATIVE PILLOW SHAM | 3CPIG | 20"x20" | GRASS |

DUVETS



DUVETS

LINEN DUVET

COUNTRY OF ORIGIN: MADE IN PORTUGAL

FIBER: 100% LINEN

HEM: 7/8" HEM

COLORS: WHITE, NATURAL

OEKO-TEX CERTIFIED



| DESCRIPTION | STYLE | SIZE | COLOR |
|-------------|----------|------------|-------|
| QUEEN DUVET | 5LD-WH-Q | 90" x 96" | WHITE |
| KING DUVET | 5LD-WH-K | 108" x 96" | WHITE |
| EURO SHAM | 5LS-WH-E | 26" x 26" | WHITE |



| DESCRIPTION | STYLE | SIZE | COLOR |
|-------------|----------|------------|---------|
| QUEEN DUVET | 5LD-NA-Q | 90" x 96" | NATURAL |
| KING DUVET | 5LD-NA-K | 108" x 96" | NATURAL |
| EURO SHAM | 5LS-NA-E | 26" x 26" | NATURAL |

The exceptional qualities of Mohair fiber combined with masterful craftsmanship create this heirloom-quality accent throw.



CORPORATE GIFT & *private label*

With over 20 years of experience, Lands Downunder offers corporate gift and private label programs tailored to fit our clients specifications. We offer an extensive range of products in a variety of compositions enabling almost limitless options and opportunities. Together we will create meaningful and successful programs with our experience and expertise on your side.

Bottom line: *We make it easy for you.*

We have had the privilege to build custom programs for various industries including *hospitality, automotive, cosmetic, real estate and banking.*

CAPABILITIES:

- Throws
- Scarves
- Travel Sets & More



*Custom packaging available,
minimum quantities apply.*

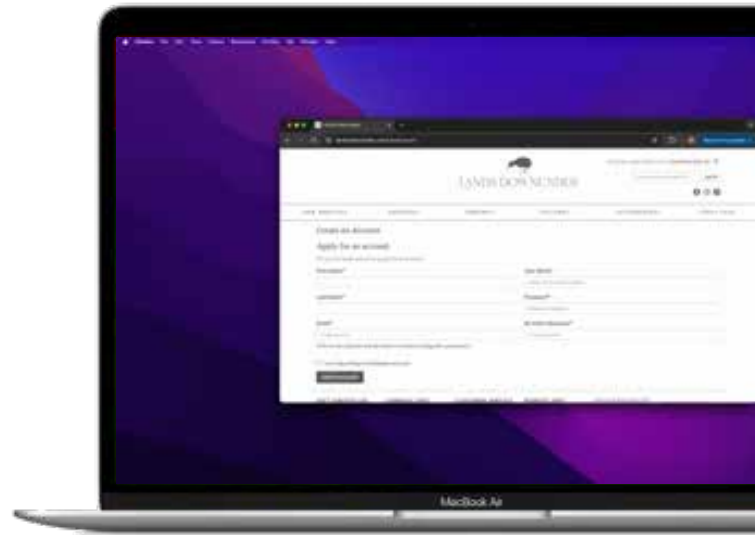
For more information contact us:

(800) 790-0332

sales@landsdownunder.com

CREATE AN ONLINE *wholesale account*

1. To register for web account, please visit:
landsdownunder.com/newaccount
2. Once your account has been approved
you can start ordering online!



Creating an online account is a better way for you to see what we currently have available in stock and ready to ship.

When you order with us online, you receive an automatic email confirmation as well as a UPS tracking number once your order has shipped.

Placing orders online is quick and easy plus orders ship within 1-2 business days.

For more information contact us:

(800) 790-0332

sales@landsdownunder.com





NEW YORK OFFICE
311 BARNUM AVENUE
PORT JEFFERSON, NY 11777

(800) 790.0332
(631) 924.3262
FAX: (631) 924.4291

ATLANTA SHOWROOM/ 9-A-18
240 PEACHTREE ST
ATLANTA, GA 30303

SALES@LANDSDOWNUNDER.COM LANDSDOWNUNDER.COM